

## Points of Interest

### Things to do along the way

#### EMERGENCY SERVICES, Dial 911

- Eastern Maine Medical Center
- St. Joseph's Hospital

#### PARKS

- Bangor Waterfront
- Cascade Park
- Union Street Recreation Area
- Bangor City Forest/Orono Bog Walk
- Kenduskeag Stream Park
- Brown Woods

#### VISITOR INFO

- Greater Bangor Convention & Visitors Bureau  
40 Harlow Street • Bangor, ME  
1-800-91-MOOSE  
(207) 947-5205  
www.VisitBangorMaine.com

#### POINTS OF INTEREST

- Bass Park
- Brewer Auditorium
- Downtown Bangor District
- Bangor Public Library
- Bangor Mall District
- Thomas Hill Standpipe

#### HIGHER EDUCATION

- Eastern ME Community College
- Husson University/NE School of Communications/Bangor Theological Seminary
- Beal College
- University College, UMA

#### ARTS & ENTERTAINMENT

- Penobscot Theatre
- Bangor Symphony Orchestra

#### MUSEUMS

- Bangor Museum & Center for History**  
Thomas A. Hill House  
159 Union St. • Bangor, ME  
(207) 942-5766 or 942-1900  
info@bangormuseum.org  
www.bangormuseum.com

Founded in 1864, this is the oldest cultural institution, which has a collection that tells the story of Bangor – from the rowdy Devil's Half Acre to the homes and lives of the wealthy lumber barons.

- Bangor Police Museum**  
240 Main St. • Bangor, ME  
(207) 947-7384 ext 5752  
(groups must call ahead for an appointment)  
www.bangormaine.gov

This museum contains hundreds of authentic police items dating back to the 1700's, including specialty displays of uniforms, news articles, and a mobile one-person jail cell called a 'tramp chair'.

- Clewley Museum**  
199 Wilson Street • Brewer, ME  
Museum Accessions Clerk:  
Phyllis Scribner, (207) 989-2693  
www.brewerhistoricalsociety.org

This museum is a turn-of-the-twentieth century in-town farmhouse that features a collection focused on Brewer-native and Civil War hero General Joshua Chamberlain.

- Cole Land Transportation Museum**  
405 Perry Road • Bangor, ME  
(207) 990-3600  
www.colemuseum.org

Learn about the transformation of transportation in America, from antique cars, planes and trains to tanks and helicopters all under one roof! Also, features the Purple Heart, Vietnam War and WWII Memorials.

- Hose 5 Fire Museum**  
247 State Street • Bangor, ME  
(207) 945-3229 or 992-4700

This museum is a former fire station built in 1897 and used as a firehouse for almost 100 years. Features unique and rare, antique fire engines and displays.

- Kinsley House Museum**  
83 Main Rd. S., Rt. 1A  
Hampden, ME  
(207) 862-3182

The Kinsley House Museum was built in 1794 and home to Martin Kinsley - Mass. Senator, Judge, and a Member Missouri Compromise Comm. and was also used by Hannibal Hamlin as a Law office from 1831-1860.

- Maine Air Museum**  
98 Maine Ave. • Bangor, ME  
(207) 941-6757  
1-877-280-MAHS (in state only)  
www.maineairmuseum.org

This museum of the Maine Aviation Historical Society features a collection of artifacts and memorabilia depicting the history of aviation, housed in a former cold war era missile assembly and maintenance facility.

- Maine Discovery Museum**  
74 Main Street • Bangor, ME  
(207) 262-7200  
www.mainediscoverymuseum.org

The largest children's museum north of Boston, watch your children's faces light up as they explore the rotating, interactive exhibits featuring the worlds of nature, geography, literature, music, science and more.

- UMaine Museum of Art**  
40 Harlow Street • Bangor, ME  
207-561-3350  
www.umma.umaine.edu

This museum has four galleries, which feature a new exhibit every three months; showcasing a collection of over 3,100 pieces by local and world-famous artists.

## BAT Community Connector

- This is the transit system for the towns of Bangor, Brewer, Veazie, Orono, Old Town, Hampden and the University of Maine.
- BAT Community Connector operates Monday through Friday. Saturday service is offered for all routes except Hampden.
- Hours of Operation are from 6:15 AM to 6:15 PM
- For Schedule and more information visit [www.bangormaine.gov](http://www.bangormaine.gov) or call (207) 992-4670
- The BAT does not operate on New Year's Day, Memorial Day, Independence Day, Labor Day, Thanksgiving and Christmas.

#### BAT Bus Stops

- Signal the driver by a wave of your hand as the bus is approaching. The driver will only stop at intersections. Stop locations in downtown Bangor are designated by BAT bus stop signs.

#### BAT 'N Bike

- All BAT buses are equipped with bike racks that are available on a first come first serve basis.
- Please ask the bus driver for instructions.

#### Boarding & Exiting

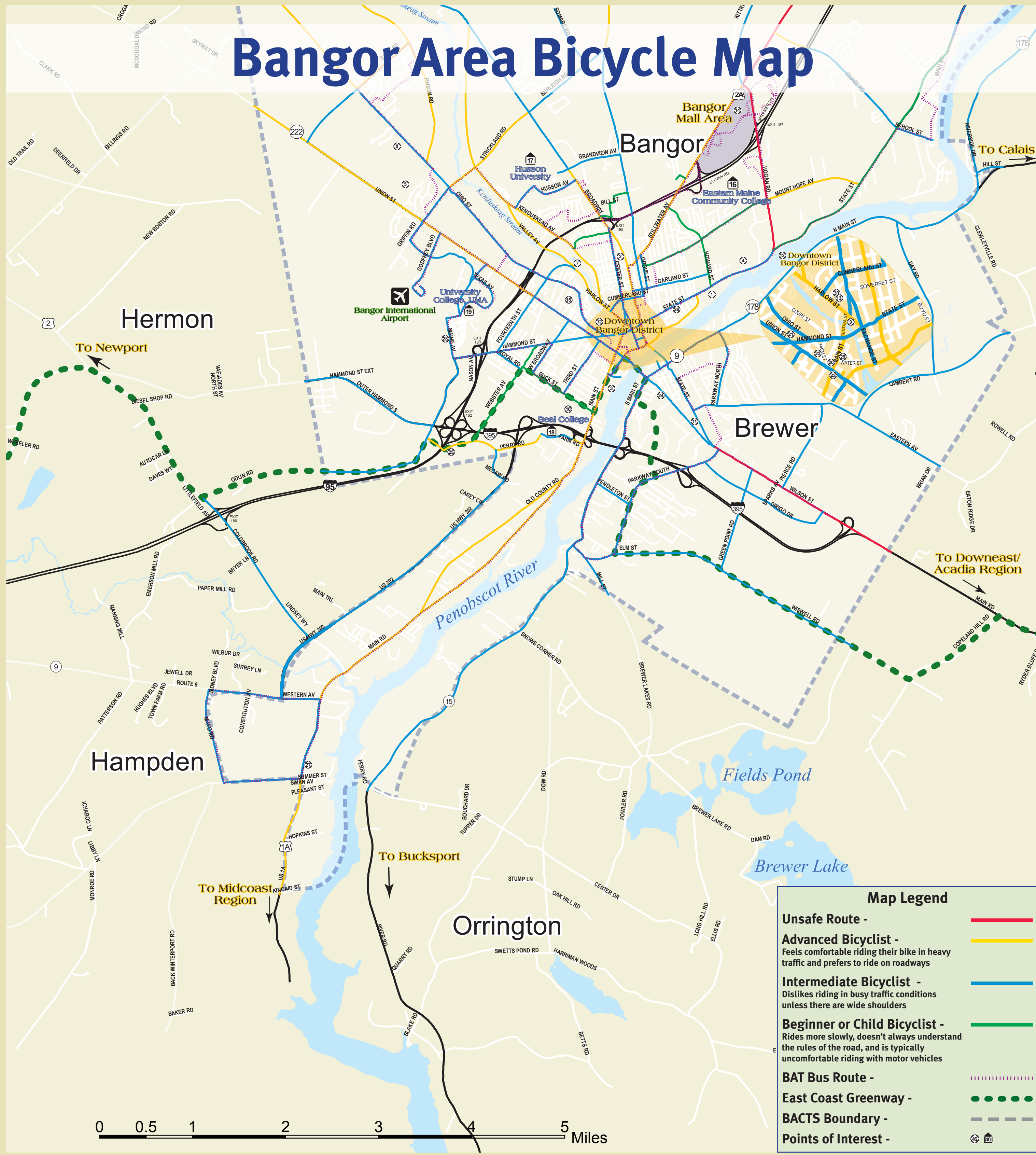
- When paying in cash, please have exact change (drivers do not carry change) ready for deposit in the canister.
- One block before your stop pull the cord over the window. The driver will then stop the bus as close to the next block as can be done safely.

#### Fees

- Single Ride \$1.25
- Under 12 with an adult \$6.00
- Under 5 with an adult FREE
- Five-Ride Tickets \$5.00
- Monthly Pass \$45.00
- Student Monthly Pass \$20.00
- Transfers FREE
- With University of Maine Card, FREE
- With Senior / Disabled fare pass \$6.00

**Fees subject to change.** Please check with the BAT before you begin your trip at (207) 992-4670 or email at [BAT@bangormaine.gov](mailto:BAT@bangormaine.gov)

# Bangor Area Bicycle Map



The Bangor Bicycling Map is produced by the Bangor Area Comprehensive Transportation System (BACTS) as an aid to bicyclists. All routes shown on the map are on regular state and local roads used by automobiles, trucks, buses, and other motorized vehicles. BACTS in no way warrants the safety or suitability of the routes indicated on these maps for shared bicycle/motorized vehicle use or for use by young and/or inexperienced riders. Bicyclists assume the risk for their own safety at all times when traveling on the indicated routes. The routes have been selected by experienced bicyclists as alternative transportation routes and/or recreational rides and inclusion on the map does not indicate that the roads are in good condition or currently or ever will have paved shoulders. Although BACTS has made a reasonable effort to ensure that the information contained in this guide is correct as of the date of publication, the actual conditions riders encounter may vary, and BACTS in no way warrants its accuracy. BACTS assumes no liability for personal injuries or property damage. This map was funded in part through a grant from the Federal Highway Administration, U.S. Department of Transportation. The views and opinions of the authors or agencies expressed herein do not necessarily state or reflect those of the U.S. Department of Transportation.



## Points of Interest

### Things to do along the way

#### EMERGENCY SERVICES, Dial 911

**Helen Hunt Health Center**  
Walk-in Care, (207) 827-6128  
242 Brunswick St., Old Town  
M - F, 6 am - 8 pm; Sat, Sun: 9 am - 4 pm

#### PARKS

Riverfront Park, Old Town  
Webster Park, Orono  
University Forest  
Hirundo Wildlife Refuge  
Bangor City Forest/Orono Bog Walk

#### POINTS OF INTEREST

Old Town Public Library  
Downtown Orono District  
Orono Public Library

#### HIGHER EDUCATION

University of Maine, Orono Campus

#### ARTS & ENTERTAINMENT

**Collins Center for the Arts**  
University of Maine Orono Campus

#### MUSEUMS

**Hudson Museum**  
University of Maine Collins Center for the Arts – (207) 581-1904  
www.umaine.edu/hudsonmuseum • hudsonmuseum@umit.maine.edu

With over 9,000 square feet of exhibition space, the museum is home to over 8,000 ethnographic and archaeological items, including Maine Native American exhibits.

**Leonard's Mills at the Maine Forest and Logging Museum**  
54 Government Road • Bradley, ME 04473-0456 – (207) 974-6278  
info@leonardsmills.com • www.leonardsmills.com

Located on the actual site of an early pioneer settlement, the museum is represented by an authentic reconstruction of a logging and milling community of the 1790's. This is a living history museum with reenactment events, self-guided tours, and nature walks.

**Old Town Museum**  
353 main Street • Old Town, ME 04468 – (207) 827-7256  
www.oldtownmuseum.org • oldtownmuseum@gmail.com

Housed in a former church, this museum features exhibits on the history of logging and lumbering industries, special temporary exhibits and simulation exhibits focused on the heritage of Old Town and surrounding communities.

**Page Farm and Home Museum**  
University of Maine Orono Campus – (207) 581-4100  
http://www.umaine.edu/pagefarm/ • pagefarm@umit.maine.edu

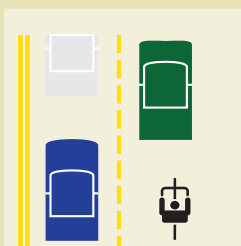
Learn about the industry, agriculture, economy, and home-life of the late nineteenth and early twentieth centuries at the home to the state's most important collection of farm technologies and artifacts.

**Penobscot Nation Museum**  
12 Down Street • Indian Island, Maine 04468 – (207) 827-4153  
www.penobscotnation.org

This museum has a collection that spans thousands of years of history through artifacts featuring birch bark canoes, historical photos and traditional garments and ceremonial wear, as well as contemporary Wabanaki art.

## Bicycle Laws

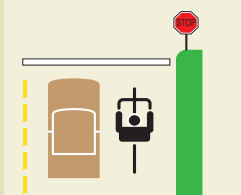
### Obey the rules of the road



- A cyclist has all the rights and responsibilities of motor vehicle drivers.

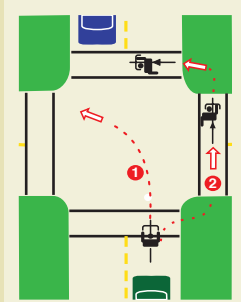
- Ride straight and in single file, obey traffic signs and signals.

- Always ride on the right side.

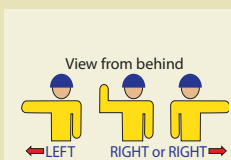


- Use caution if passing other traffic on the right.

- When approaching an intersection, use the appropriate lane for the direction you intend to travel.

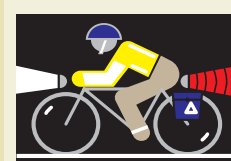


- You may turn left as a vehicle ① by moving into the left side of the travel lane (or left turn lane) OR cross like a pedestrian ② by stopping, dismounting, and walking across crosswalks.



- Signal ALL turns

- When stopping make sure you are allowing the space needed based on weather conditions.



- When riding at night, Maine State Law requires a headlight on front and a red or amber reflector or light on the back visible from at least 200 feet. In addition, we recommend you use a flashing taillight and reflective clothing for night riding.



- Helmets are required. The State of Maine requires all bicycle riders under the age of 16 to wear a helmet, but it is recommended that all riders wear one.

## Take Care of Your Bicycle

- Take your bicycle to a bike shop at least once a year for a professional inspection and tune-up.
- Check all racks and accessories often to be sure they are tightly secured.
- Wear bright colors.
- Always carry appropriate repair supplies and plenty of water.

Laws & bicycle care info referenced from the *Bicycle Coalition of Maine*.

www.BikeMaine.org • (207)623-4511

You can also visit *Explore Maine by Bike*  
www.exploremaine.org/bike



## Bike Shops in the Bangor Area

**Pat's Bike shop**  
373 Wilson St. Stop 1  
Brewer, ME 04412

**L & J's Bike Shop**  
1074 School St.  
Veazie, ME 04401

**Rose Bicycle**  
9 Pine St.  
Orono, ME 04473

**Ski Rack Sports**  
24 Longview Dr.  
Bangor, ME 04401

**Stillwater Recumbents**  
459 Poplar St.  
Old Town, ME 04468

**Triathlete Sports**  
186 Exchange St  
Bangor, ME 04401

**Dick's Sporting Goods**  
Bangor Mall  
641 Stillwater Ave  
Bangor, ME 04401

